

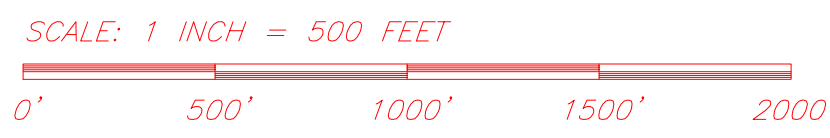
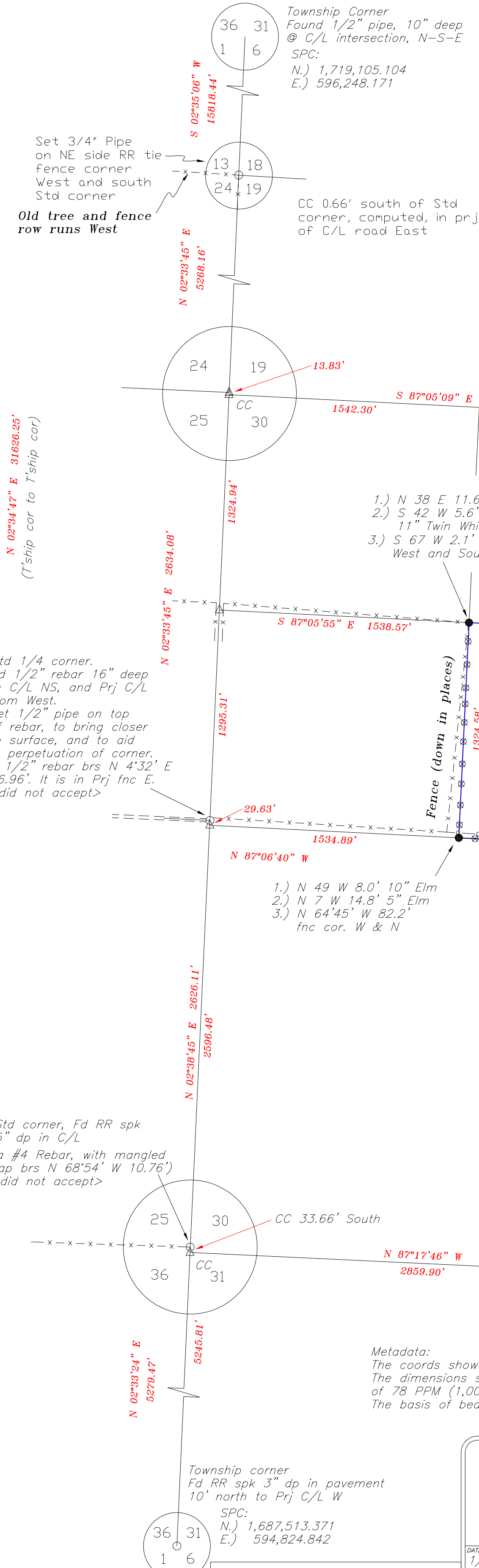
Rick & Angela Austin Survey

SE1/4-NW1/4 Section 30, T12S. R31 West

And Tie line shown on W line of Township

Little River County, Arkansas

Report of Survey
 I have resurveyed the entire westerly line of Township 12 South, Range 31 West.
 There is a general state of confusion regarding this Range line. Some areas, folks used the corner for Range 32 West, for Range 31 West. Some areas folks measured the offset the wrong way. I have tied into most use lines, and occupation lines. Along this westerly boundary.
 What I found was that when applying a scale factor, of 5271.04 feet, per mile, (a chain length of 65,88802) then certain facts become evident. A number of corners match the original GLO survey, with the scale factor. It is my hope that showing and publishing this plat, will help alleviate and remove some of the mystery associated with the Range Line.
 I have marked the PERIMETER of the SE1/4-NW1/4 Section 30, as shown, with 1/2" rebar, and caps, at the 4 corners. And, I have marked the perimeter, with 3/8" rebar, of sufficient quantity to allow fence construction, and painting. The line rebar may vary up to about an inch of the true line, and are not intended to become kinks in the line, at some future date. The lines run straight.
 Nathaniel Dearyan, PLS December, of 2016, and January of 2017.

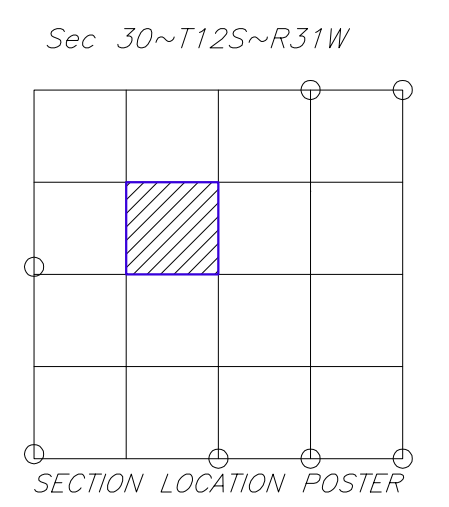
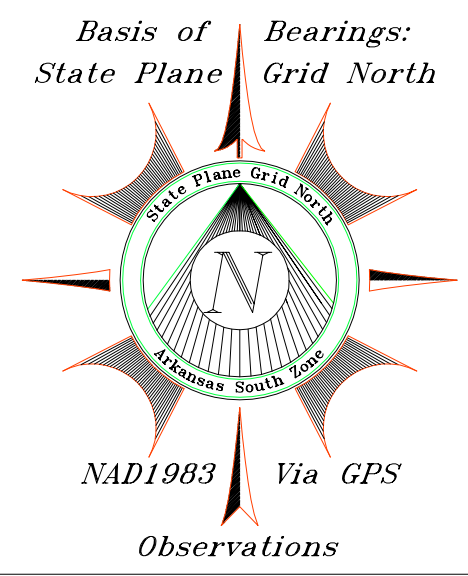


Master Craft Land Surveying Co.
 1189 Thunder Mtn. Rd
 Caddo Gap, Arkansas 71935
 Fred: (870) 356-2733
 Nathan: (870) 356-3797

DATE: 1/02/2016
 COGO FILE: 12-31-Wallace
 CAD FILE: 12-31-Wallace.crd
 DRAWING NUMBER: 695-2017
 STATE FILING NUMBER:

- Some of these are tie lines:**
- 500-12S-31W-0-06-304-41-1254
 - 500-12S-31W-0-07-304-41-1254
 - 500-12S-31W-0-18-304-41-1254
 - 500-12S-31W-0-19-234-41-1254
 - 500-12S-31W-0-30-000-41-1254
 - 500-12S-31W-0-31-304-41-1254

- Symbol Legend:**
- Found Monument as noted
 - Set 1/2" Rebar, with cap
 - △ Computed Point



Fd RR spike in C/L NS, flush with surface I drove it down 1", and set a magnet under the RR spike head.

Fd # 4 rebar, 7" deep, in projection of fence from West. 3'E to C/L